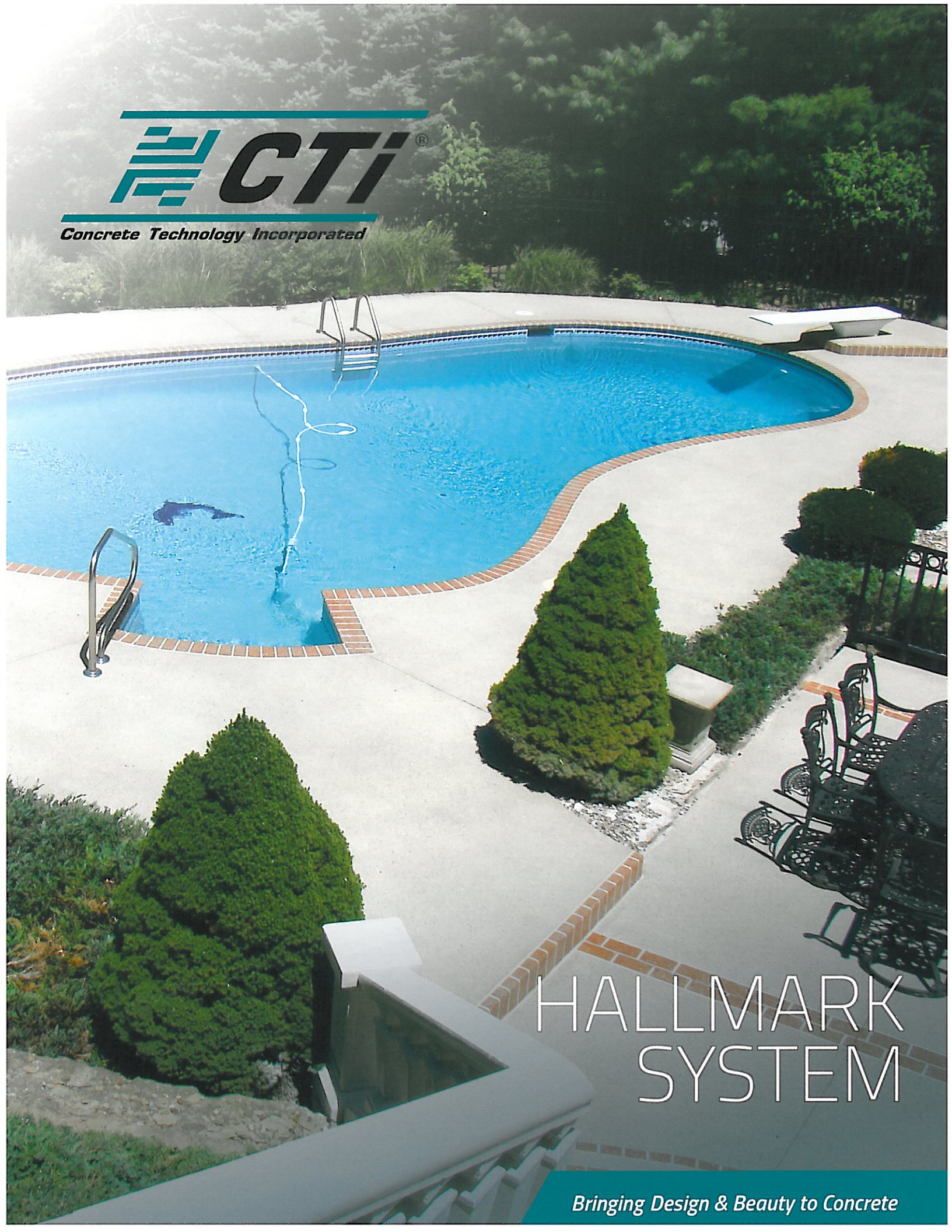




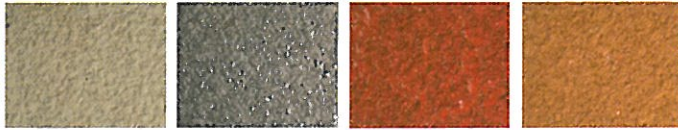
Concrete Technology Incorporated

A high-angle photograph of a swimming pool with a curved, irregular shape. The pool is surrounded by a light-colored concrete deck with decorative brick borders. There are two sets of stainless steel pool ladders. The pool is set in a landscaped area with several large, conical evergreen shrubs. To the right, there is a patio area with a dark metal dining table and chairs. The background shows a dense line of trees.

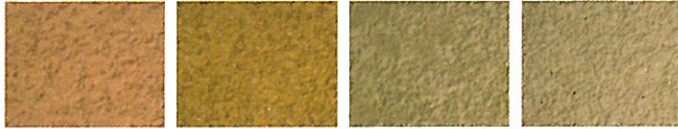
HALLMARK SYSTEM

Bringing Design & Beauty to Concrete

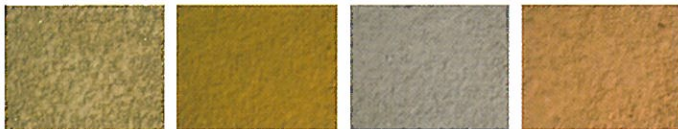
HALLMARK SYSTEM



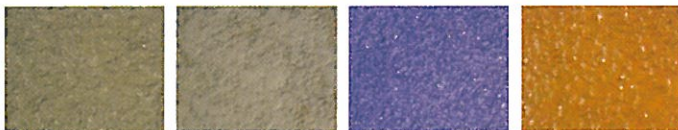
WHITE BLACK TERRA RED SIERRA



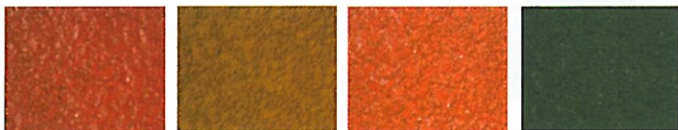
SALMON DESERT BEIGE SANDSTONE ANTIQUE WHITE



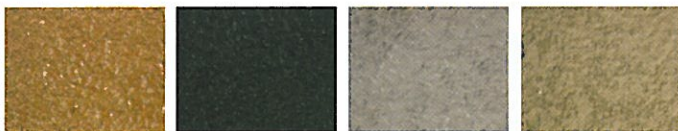
ALMOND GOLDEN WHEAT PLATINUM GRAY CORAL REEF



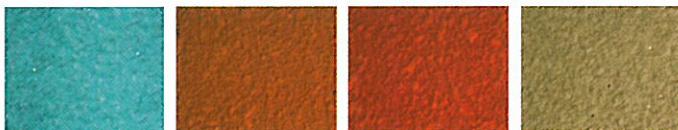
OXFORD GRAY NATURAL GRAY BLUE BROWN



BRICK RED YELLOW OXIDE BURNT SIENNA GREEN



CHOCOLATE FOREST GREEN DARK GRAY LT. OXFORD GRAY



TEAL LT. TERRA COTTA DK. TERRA COTTA CROMWELL GRAY

Resurfacing a driveway, patio, pool deck, walkway or even a vertical surface is easy and cost effective with CTI's Hallmark System.

The Hallmark System offers an endless array of colors, textures and patterns that gives your home a look of natural stone, brick, slate, marble or something truly unique. The Hallmark System offers superior protection for your concrete while allowing for easy clean-up.

Recommended uses:

Residential

- Driveways
- Patios
- Pool Decks
- Walkways
- Vertical Walls
- Balconies

Commercial

- Convenience Stores
- Schools
- Auto Showrooms
- Grocery Stores
- Convention Centers
- Restaurants

Technical Information (sealed with Series 150 Clear):

Compressive Strength	5715 psi
Tensile Strength	615 psi
Flexural Strength	1585 psi
Shear Bond Strength	650 psi
Abrasion Resistance	18 in.-lbs after 28 days
Chloride Ion Resistance	Ponding 3% Sodium Chloride/60 days 100%
Freeze/Thaw Resistance	at 1" depth - Passes 60 cycles
UV Resistance	No discoloration when exposed to Ultra-Violet
Sulfuric Acid	10% solution, 5 min. immersion - unaffected
Sodium Hydroxide	10% solution, 5 min. immersion - unaffected
Citric Acid	10% solution, 5 min. immersion - unaffected
Lactic Acid	10% solution, 5 min. immersion - unaffected
Gasoline	5 minute immersion - abrades slightly

YOUR AUTHORIZED DEALER

8770 133rd Ave. N., Largo, FL 33773 P 800.447.6573 or 727.535.4651 F 727.536.8273 designcti.com

Colors are matched as closely as possible to our standards. Colors may be affected by age, light and texture. The color selector is designed to assist you in making your selection from CTI's Acrylistain System colors. CTI's Acrylistain System colors are measured by weight (not volume) and are designed to be mixed with water as the vehicle to dispense the pigments. Colors will vary slightly to dramatically based on application, substrate, temperature and humidity. To ensure proper color, the entire contents of CTI's Acrylistain System should be used. Be sure to thoroughly read all application data. Due to reproduction limitations, it is necessary to reserve the right to allow for reasonable variations of application. Printed colors show approximate colors with the effect of certain texture and sealer alteration along with finishing technique.