



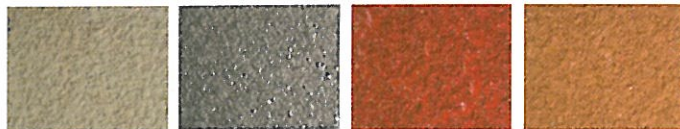
Concrete Technology Incorporated

ACRYLISTAIN SYSTEM

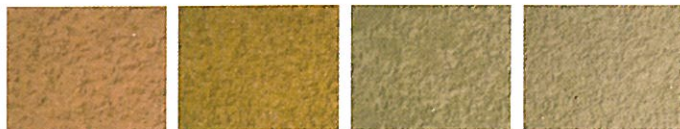
INDOOR OR OUTDOOR

Bringing Design & Beauty to Concrete

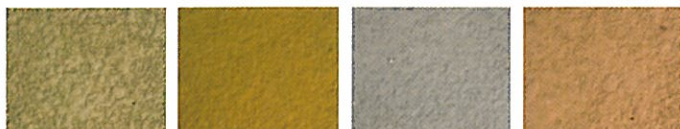
ACRYLISTAIN SYSTEM



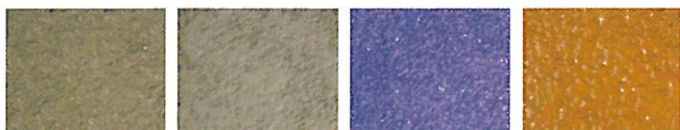
WHITE BLACK TERRA RED SIERRA



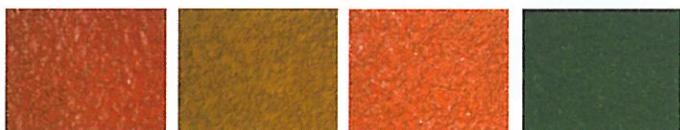
SALMON DESERT BEIGE SANDSTONE ANTIQUE WHITE



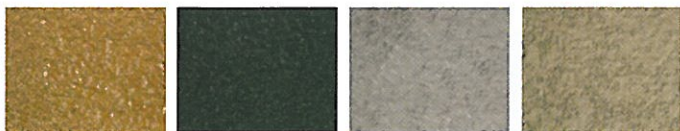
ALMOND GOLDEN WHEAT PLATINUM GRAY CORAL REEF



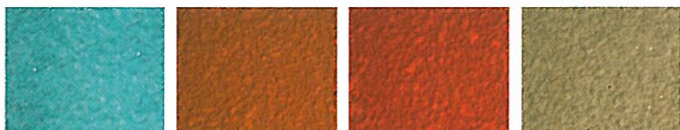
OXFORD GRAY NATURAL GRAY BLUE BROWN



BRICK RED YELLOW OXIDE BURNT SIENNA GREEN



CHOCOLATE FOREST GREEN DARK GRAY LT. OXFORD GRAY



TEAL LT. TERRA COTTA DK. TERRA COTTA CROMWELL GRAY

The CTi Acrylistain finish provides your home with the rich, warm look of concrete stain while giving your floors a tough as nails protective coating that will withstand heavy traffic, stains and keep its luster for years.

The Acrylistain System comes in a number of colors and styles to give you a look that is all your own. Unlike acid stained concrete, CTi's Acrylistain System uses only environmentally friendly products that will not damage cabinets, rails and the surrounding areas. In addition, the Acrylistain System provides a consistent, color integrated look that is not affected by the PH or make-up of the concrete.

The Acrylistain System can be used for:

- Kitchens
- Playrooms
- Basements
- Bathrooms
- Foyers

Outside the home it can be used for:

- Driveways
- Patios
- Walkways

Compressive Strength (ASTM C-109-73): PSI 28 days 5,715 PSI

Flexural Strength (ASTM C-348-72): PSI 28 days 1,585 PSI

Tensile Strength (ASTM C-190-72): PSI 28 days 615 PSI

Shear Bond Strength 20 DAYS: 650 PSI

Abrasion Resistance: (% Weight loss): 28 days 18 in.-lbs

Chloride Ion Resistance: Ponding 3% Sodium Chloride/60 days 100% at 1" depth

Freeze-Thaw Resistance: (ASTM C-291) Passes 60 cycles

UV Resistance: No discoloration when exposed to Ultra-Violet light

H2SO4 (Sulfuric Acid): 10% solution: 5-minute immersion: Unaffected

NAOH (Sodium Hydroxide): 10% solution: 5-minute immersion: Unaffected

Citric Acid: 10% solution: 5 minute immersion: Unaffected

Gasoline: 5 minute immersion: Abrades slightly

Lactic Acid: 10% solution: 5 minute immersion: Unaffected

YOUR AUTHORIZED DEALER

8770 133rd Ave. N., Largo, FL 33773 P 800.447.6573 or 727.535.4651 F 727.536.8273 designcti.com

Colors are matched as closely as possible to our standards. Colors may be affected by age, light and texture. The color selector is designed to assist you in making your selection from CTi's Acrylistain System colors. CTi's Acrylistain System colors are measured by weight (not volume) and are designed to be mixed with water as the vehicle to dispense the pigments. Colors will vary slightly to dramatically based on application, substrate, temperature and humidity. To ensure proper color, the entire contents of CTi's Acrylistain System should be used. Be sure to thoroughly read all application data. Due to reproduction limitations, it is necessary to reserve the right to allow for reasonable variations of application. Printed colors show approximate colors with the effect of certain texture and sealer alteration along with finishing technique.